

2 1/2"x8" Non-Rectified Field Tile - Gloss



White - WHI  
DECCLOWHI28G



Crème - CRE  
DECCLOCRE28G



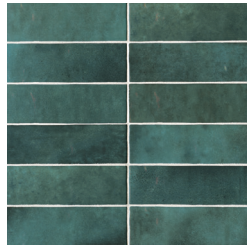
Baby Blue - BAB  
DECCLOBAB28G



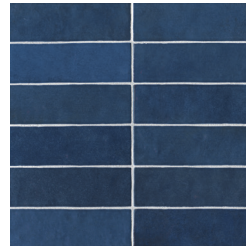
Grey - GRE  
DECCLOGRE28G



Pink - PIN  
DECCLOPIN28G



Green - GRN  
DECCLOGRN28G



Blue - BLU  
DECCLOBLU28G



Black - BLA  
DECCLOBLA28G

5"x5" Non-Rectified Field Tile - Gloss



White - WHI  
DECCLOWHI55G



Crème - CRE  
DECCLOCRE55G



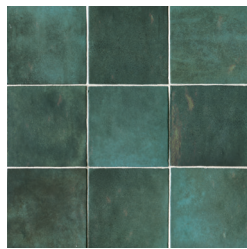
Baby Blue - BAB  
DECCLOBAB55G



Grey - GRE  
DECCLOGRE55G



Pink - PIN  
DECCLOPIN55G



Green - GRN  
DECCLOGRN55G

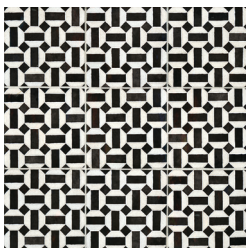


Blue - BLU  
DECCLOBLU55G



Black - BLA  
DECCLOBLA55G

5"x5" Non-Rec. Deco Wall Tile - Gloss



Loire Decorative Pattern  
DECCLOLOI55G

1/2"x8" Jolly - Miter Edge Trim - Gloss



Available in All Colors  
DECCLO...JOLG



# Cloé

Decorative (Glazed Ceramic)

Photo Features 2 1/2"x8" Non-Rectified Field Tile - Gloss in Green.

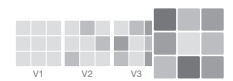
## SIZING & PACKAGING

Type	Shape	Item Code	Size	Description	Pcs / Ctn	Sf / Ctn
Field		DECCLO***28G	2 1/2"x8"	Non-Rectified Field Tile - Gloss	76	10.64
		DECCLO***55G	5"x5"	Non-Rectified Field Tile - Gloss	57	10.83
Deco		DECCLOLOI55G	5"x5"	Non-Rectified Loire Decorative Pattern Wall Tile - Gloss	57	10.83
Trim		DECCLO***JOLG	1/2"x8"	Jolly - Miter Edge Trim - Gloss	60	-

## ANSI TECHNICAL SPECIFICATIONS

	DCOF Acutest	Scratch Resistance MOHS	Breaking Strength ASTM# C648	Water Absorption ASTM# C373	Chemical Resistance ASTM# C650	Bond Strength A137.2-7.7	Thermal Shock ASTM# C484
Results	N/A	3	ISO ≥ 600 N	> 1.0 (Ceramic)	Unaffected	N/A	Pass

Shade Variation



V4-High

## APPLICATIONS

	Floors	Walls	Countertops	Shower Floors	Shower Walls	Pools/Spas
Residential		●			●	
Commercial		●			●	



## LEGEND

- Product rated for Interior & Exterior use
- Applications & ANSI Technical Specifications do not apply
- Product rated for Interior use only
- \* Special Order only
- † May be suitable for Exterior Floors



This product may be installed near or on the face of high heat areas but not inside. This product cannot be installed in exterior or submerged applications. The product may be installed on shower walls. Do not use chlorine, acids, or other harsh chemicals to clean. Use only non-sanded grout with this product. This product is artisanal and may possess inherent size and color variation. This tile must be installed with premium modified thinset. Do not use mastic.

Merchandising materials and samples are for general reference only and representative of a product's potential characteristics. Tile is subject to variation in color/shade, size, texture, and finish. Field, mosaic and trim tile may not match exactly. Blend tiles from different boxes to achieve consistent shade distribution. Installer and end user must conduct a dry mock layout under proper lighting conditions to inspect the product. Installation constitutes acceptance of the product. Reference the TCNA, ANSI, Manufacturer's specifications, and Bedrosians Care & Maintenance Guide. Improper installation, application, use, care and maintenance voids warranty. We reserve the right to make product changes without notice.